

Tourism

Living

Career

Business

Learning



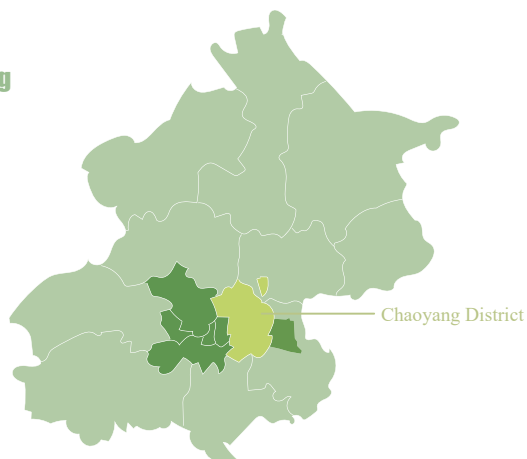
CHAOYANG



VISITOR GUIDE TO BEIJING CHAOYANG



Map of Beijing



Situated in eastern Beijing, Chaoyang District is the largest and the most populous urban area in Beijing. It has almost all foreign embassies in China, 90 percent of foreign media in Beijing, 80 percent of international organizations and chambers of commerce, 70 percent of the regional headquarters of transnational corporations, 70 percent of foreign-funded financial institutions and over 50% of international conferences.

The number of Michelin-starred restaurants, black pearl restaurants and coffee shops in Beijing's Chaoyang ranks first in the capital. Currently, it is focusing on "culture, internationalization and large-scale greening", accelerating the high-quality development in various fields of the economy and society. Beijing's Chaoyang aims to be a place friendly to living, careers, businesses, learning, and tourism.

BEIJING CHAOYANG IN BRIEF

Map of Beijing Chaoyang	02
Beijing Chaoyang profile	03
Embassy area	04

LIVING IN BEIJING CHAOYANG

1. Upon-arrival registration	05
2. Useful apps	06
3. Payment	07
4. Transportation	08
5. Communication	10
6. Accommodation	11
7. Medical services	12
8. Children's education	14

EXPLORING BEIJING CHAOYANG

1. Daily necessities	16
2. Libraries & bookstores	17
3. Tourist sites	18
4. Cultural events	20
5. Taste of the city	22
6. Shopping & entertainment	24

SERVICE DIRECTORY

1. Emergency services	26
2. Information services	27

Map of Beijing Chaoyang

CHAOYANG



Beijing Chaoyang profile

In the east of the capital, brimming with openness and vitality.

Area

627 communities; 3.442 million residents; 470.8 square kilometers.

Economic growth

GDP of 838.72 billion yuan in 2023; the tertiary industry recorded an added value of 786.49 billion yuan.

Business

Beijing's premier zone of international consumption, with 16 high-end business districts and a big number of commercial complexes.

Internationalization

A hub of global resources and the center for international exchanges.

Culture and tourism

Beijing's Chaoyang tops the city in terms of the number of cultural enterprises, the scale of tourism, and the number of national-level cultural export enterprises and key projects. Culture and art have become part of the fabric of Beijing's Chaoyang District as a result of the construction of "City of Museums", "City of Reading" and "City of Art".

Scan for more information



Embassy area

Serving as the capital's window of internationalization and home to 99% of foreign embassies, Beijing's Chaoyang has long been reputed as "China's premier District of international exchanges" .

First embassy zone:

Its boundaries start from the East Second Ring Road in the west to Silk Street in the east, from Janguomen Outer Street in the south to Ritan North Road in the north.

Second embassy zone:

It stretches from Dongzhimen Outer Street in the west to the East Third Ring Road in the east, from Gongti North Road in the south to Liangma River South Road in the north.



Third embassy zone:

It extends west to Yansha Bridge, east to Liangmaqiao East Street, south to Liangmaqiao Road, and north to Laitai Flower Market.

Fourth embassy zone:

Its borders extend east to the Beijing Capital International Airport Second Expressway, south to Bahe North Riverside Road, west to Beixiaohe East Road, and north to Guihua Road. (It is currently in the development and construction phase.)

Upon-arrival registration

Services are available for foreigners who apply for residence permits and accommodation registration.

Residence permit is for foreigners residing for more than 6 months.

Institution

Chaoyang Branch of Beijing Municipal Public Security Bureau

Service provided

1. Residence Permit for Work
2. Application for Reunion Residence Certificate and Extension (visiting relatives)



Scan for more information



According to the relevant provisions of Chinese law, foreigners who live or stay in accommodations other than hotels should apply for accommodation registration within 24 hours after move-in.

Application

Bring the rental contract, passport and other relevant documents to the local police station for on-site application.

Apply online by scanning the QR code



Useful apps

Tips

You can conveniently download popular mobile applications through pre-installed app stores on your phone. These app stores offer a wide selection of apps and ensure the security and reliability of the downloads.

E-payment



Alipay



WeChat

Transportation



Baidu Map



Gaode Map



Didi

Travel booking



Ctrip



Fliggy



China Railway

Food delivery



Meituan Waimai



Ele.me

Social media



WeChat



Weibo



Douyin



Xiaohongshu

Event ticket purchase



Damai



Taopiaopiao



Maoyan

Translation apps



iFLY TEK



YouDao

Online shopping



Taobao



JD



Pinduoduo

Restaurant review



Dianping



Meituan

Payment

Pay with Alipay and WeChat Pay

Alipay offers various payment, financial and lifestyle services. In addition to its payment function, Alipay also provides various lifestyle services such as food, transportation, movie ticket booking, healthcare, and express delivery.



Scan for more information



WeChat Pay serves the needs of daily payment through WeChat app, requiring you to link your bank cards to your WeChat account in order to make payments. You can pay by scanning merchant QR codes, transferring money, or presenting your own payment QR code. You can manage and use the payment function in the Me-Services-Money/Wallet section.

Scan for more information



POS

For foreigners holding international credit cards, such as Mastercard and Visa, payment through POS terminals is acceptable.



Cash

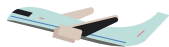
For those preferring to pay in cash, please exchange Chinese RMB in advance.

Scan for more information



Transportation

Airport



Beijing Capital International Airport is located in the northeast part of Beijing. It is an aviation gateway of Beijing, a window for international communication, and a radial center for China's civil aviation network.



Scan for more information

Bus



There are more than 1,500 regular bus lines in the urban and suburban areas of Beijing with most routes running from 5:00 am - 11:00 pm.

Tips To check travel routes, please visit the official website of the Beijing Public Transport Corporation. You can also download the app "Beijing Public Transport" or "Ruubypay" in your app store.



Scan for more information



Railway

Beijing Chaoyang Railway Station is located in Chaoyang District, north of Yaojiayuan Road and outside the East Fourth Ring Road. With a construction area of 182,600 sqm, it has 7 platforms and 15 railway lines that serve high-speed trains, regular trains, and the northeast loop of the Beijing Suburban Railway in the northeast direction.



Scan for more information

Subway

Beijing has 27 subway lines in operation. Among them, Beijing Subway Line 14 passes through shopping malls such as Hopson One, China Central Mall, SKP, SOLANA in Chaoyang. Commercial Belt Along Line 14 unlocks new ways to explore Chaoyang.



Scan for more information

Transportation

Taxi



The logos of taxi companies are printed on the vehicle door and the top lightbox of the taxi. Translation software on your mobile phone or preparing a written destination in Chinese will help.

Tips You can also hail a taxi with online car-hailing apps: Didi, Dida, Meituan...



Scan for more information

Shared bike

Riding a shared bicycle has become a common way of transportation in Beijing. There are various brands of shared bikes for you to choose, including Meituan bicycle, Hellobike, and Qingju bike.



Scan for more information

Car rental

The requirements for foreigners to rent a car are:

- Aged 18 years old or above
- Valid Chinese mainland driving licence
- Valid form of ID
- Credit card with a certain credit limit
- Foreign driving licence can be converted into a Chinese driving licence.



Scan for more information



Scan for more information

Communication

Operators service hotlines

China Mobile : 10086

China Telecom: 10000

China Unicom: 10010



Tips

To obtain a SIM card, real-name authentication registration is required.

Application

Foreigners need to go to a local telecom office in person to buy a card and be guided to finish the process.

Prepare **valid passport, Mainland Travel Permit for Hong Kong and Macao Resident** or other relevant documents.

Payment can be made in cash, by bank card, or through mobile payment platforms such as WeChat or Alipay.

Online official office application

If users are unable to visit a store, they can also try to apply for a phone card on the operator's official website.

Special counters for foreigners to apply for a local telecom card are available at Wangjing, Sanlitun and Terminal 2 of the Beijing Capital International Airport.

Accommodation

Beijing's Chaoyang District offers a variety of options to suit every visitor's preference and budget.



Hotel booking

A range of hotel booking apps with user-friendly interfaces and user ratings are available to assist visitors in finding suitable hotels in Beijing's Chaoyang District.



Ctrip



Expedia



Booking



Fliggy

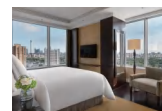


Hotels.com

Recommended Hotels



China World Hotel



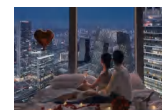
Four Seasons Hotel Beijing



The Westin
Beijing Chaoyang



Kempinski Hotel Beijing
Yansha Center



China World
Summit Wing Beijing



Scan for
more information

Apartment renting

A variety of rental apps present numerous options for renting apartments, offering visitors a home-away-from-home experience.



Lianjia



515j



Maitian Online

Scan for more information



Medical services



Tips

Simply communicate your discomfort to the staff at the hospital reception desk, and they will guide you to a related department to visit.

- Bring a **valid passport** and show at the registration desk.
- Hospitals are well marked with signs in both Chinese and English.
- Many community hospitals in Beijing's Chaoyang have traditional Chinese medicine clinics.
- In Beijing's Chaoyang, you may visit various types of medical institutions that provide foreign language services, or consult with community health service centers that provide signed family doctor services.
- Family doctor services are available through a signed contract. Foreigners can also seek assistance from family doctors who provide continuous health management for health guardians and propose suitable medical plans.
- There is a wide selection of international hospitals available in Beijing's Chaoyang, providing diverse options for your medical needs.



Scan for more information



Medical services

One-stop medical services are available in Beijing's Chaoyang District. Here are some hospitals and medical institutions open to foreigners.

• China-Japan Friendship Hospital

Contact: 010-84205121

Address: No. 2 Yinghuayuan East Street, Chaoyang, Beijing

• Children's Hospital of Capital Institute of Pediatrics

Contact: 010-65612345

Address: No. 2 Yabao Road, Chaoyang, Beijing

• Beijing Chaoyang Hospital, Capital Medical University

Contact: 010-85231653 and 010-85231481

Address: No. 8 Gongti South Road, Chaoyang, Beijing

• Beijing United Family Hospital

Contact: 400-8919191

Address: No. 2 Jiangtai Road, Chaoyang, Beijing

• Raffles Hospital Beijing

Contact: 010-64629112

Address: Suite 105, Wing 1, Kunsha Building, No. 16 Xinyuanli, Chaoyang, Beijing

• Chuiyangliu Hospital Affiliated to Tsinghua University

Contact: 010-67742573

Address: No. 2 Chuiyangliu South Street, Chaoyang, Beijing

• Sanfine International Hospital

Contact: 010-64136688

Address: Building 4, No. 13 Courtyard, Gongti North Road, Chaoyang, Beijing

• Beijing Chaoyang District Sanlitun Community Health Service Center

Contact: 010-64155582

Address: No. 45 North Sanli South, Chaoyang, Beijing

• Sanlitun Second Community Health Service Center

Contact: 010-85328916

Address: Buildings 1 and 2 (2nd, 3rd, and 4th floors), No. 16 Liangmahe South Road, Chaoyang, Beijing



Scan for more information

Children's education

International Education in Beijing's Chaoyang

Beijing's Chaoyang has boasted a well-established and standardized international education system, providing a wide range of mainstream international curricula for children of foreigners to cultivate their international understanding as well as enhance their cross-cultural competence and understanding of Chinese culture.

- In addition to international schools, foreigners also have the option of enrolling their children in over 500 regular schools at primary and secondary levels as well as kindergartens to study Chinese curricula.

- At present, more than 20,000 students have received international education in Beijing's Chaoyang, making "international education in Beijing's Chaoyang" a highly acclaimed brand.

Admission Application

- Parents interested in schools for children of foreign nationals can contact the school directly and submit the necessary documents for application.

- Parents interested in kindergartens can inquire directly with kindergartens nearby.

- If you have any inquiries regarding the enrollment policies for regular primary and secondary schools, please contact the Chaoyang District Admissions and Examinations Center Hotline at +86(10) 85967525 or the Chaoyang District Education Commission Citizen Hotline at +86(10) 85851008.



Children's education

International Schools List

- Western Academy of Beijing
- British School of Beijing
- Korean International School in Beijing
- French International School of Beijing
- Beijing BISS International School
- Yew Chung International School of Beijing
- Harrow International School Beijing
- Australian International School of Beijing
- 3E International Kindergarten of Beijing
- The International Montessori School of Beijing
- Canadian International School of Beijing
- The Children's House International Montessori Kindergarten
- Etonkids International Kindergarten

Scan for more information



Daily necessities

24-hour convenience store chains

Beijing's Chaoyang has created a widespread service network of 24-hour convenience stores, which covers such well-known brands as Lawson, Family Mart, Seven-Eleven, and Bianlifeng.



Membership Supermarkets

Freshippo

Freshippo integrates online and offline services, providing high-quality fresh food and daily necessities. You can shop through the Freshippo mobile app or visit their physical stores. After selecting the products, you can choose fast delivery or pick up in-store.



Chain Supermarkets

Medium-sized chain supermarkets are located at shopping malls or business circles in Beijing's Chaoyang, such as BHG and Ole'.



Market Place
高级超市



Jingkelong

As a distinctive supermarket chain in Beijing's Chaoyang, Jingkelong Supermarket currently operates 133 retail stores, including hypermarkets, comprehensive supermarkets, and convenience stores. With a total business area of approximately 180,000 square meters, it covers most areas of Beijing. Jingkelong primarily offers daily consumer goods, fresh produce, fruits, and vegetables, known for their high quality and affordable prices.



Libraries & bookstores

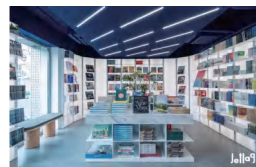


Capital Library

Address: Capital Library of China, No. 88 East Third Ring South Road, Chaoyang, Beijing

CITIC Bookstore

Address: 1st Floor, West Gate, Genesis Beijing, No. 8 Xinyuan South Road, Chaoyang, Beijing



Jetlag Books

Address: First floor, Unit W1-5, Taikoo Li West, Sanlitun, Chaoyang, Beijing

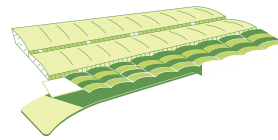
Page One (Sanlitun Store)

Address: S2-21, 22, Building 2, Taikoo Li, No. 19 Sanlitun Road, Chaoyang, Beijing



TSUTAYA BOOKS

Address: No. 10 Chaoyangmen Outer Street, Chaoyang, Beijing



Tourist sites

Famous sites include CBD, 798 Art District, Bird's Nest, Water Cube, Sanlitun TaiKoo Li, Liangma River, Pop Mart at Chaoyang Park, Panjiayuan Antique Market, and Happy Valley.



Scan the QR code
to book ferry tickets.

Olympic Park

The Olympic Park is an extension of the city's traditional central axis, symbolizing the continuation of China's thousand years of historical culture. The park is home to many popular attractions such as the "Bird's Nest", "Water Cube" and "Olympic Tower". Furthermore, hosting the 2008 Summer Olympics and the 2022 Winter Olympics has made Beijing the world's only "Dual Olympic City".

798 Art District

798 Art District brings together more than 400 cultural institutions, including galleries, design studios, art exhibition spaces, artist studios, fashion stores, restaurants and bars.

Address: No. 2 Jiuxianqiao Road, Chaoyang, Beijing

Liangma River

The Liangma River is a tributary of the northeast moat. Tourists can take sightseeing cruise ships to travel along the International Style Waterfront of the Liangma River; The breeze, the water, the shadow of lights and the croaking of frogs combine to produce a harmonious picture.

Sightseeing cruise boarding points:
Solana Wharf, Solana, Chaoyang Park Road, Chaoyang, Beijing

Tourist sites



Pop Land

Pop Land is the first immersive IP-themed park created by POP MART International Group, and opened on Sept. 26, 2023.

Address: No.1, Chaoyang Park South Road Block 40, Chaoyang, Beijing



Chaoyang Park

Chaoyang Park is a large comprehensive, multi-functional cultural, leisure, sports, and entertainment park dominated by garden greening. It is a national AAAA-level tourist attraction, a key park and boutique park in Beijing.

Address: No.1, Chaoyang Park South Road, Chaoyang, Beijing



China National Museum of Arts and Chinese Intangible Cultural Heritage

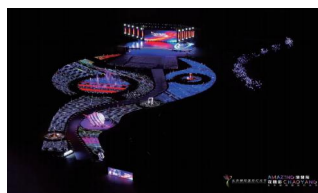
Covering an area of 10,463 square meters, it includes interactive experience halls, temporary exhibition halls, intangible cultural heritage exhibition areas, and arts and crafts exhibition areas.

Address: No. 16 Hujing East Road, Chaoyang, Beijing

Cultural events

Beijing Chaoyang International Light Festival

The Beijing Chaoyang International Light Festival starts from the fourth quarter each year and lasts for a month. It is a visual feast of light, shadow, and entertainment. It is on show in Olympic Forest Park, Sanlitun commercial district, Chaoyang Park, Liangmahe commercial district, and so on.



Beijing Folk Culture Festival

The Dongyue Temple Fair presents a kaleidoscope of colors, smells and sounds. Dongyue Temple, where the Beijing Folklore Museum is located, is a key national heritage site with its history dating back more than 700 years. The Dongyue Temple Fair is one of the oldest of its kind in the city.



Cultural events

Established brands

Beijing CBD Forum

The Beijing CBD Forum, hosted by Chaoyang District People's Government of Beijing Municipality, focuses on the theme of leveraging international exchange strengths and leading Beijing's opening-up. It aims to enhance the international influence, competitiveness and attractiveness of Beijing's CBD across the board.



Beijing Chaoyang International Tea Culture Festival

The Beijing Chaoyang International Tea Culture Festival features a wide range of tea sets and utensils. Various experiential activities provide residents, tourists and foreign friends with an immersive aesthetic tea culture experience, integrating distant views, attentive listening, light fragrance, sampling, and sensory experiences into one journey.

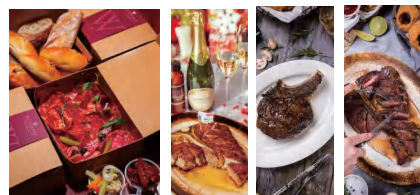


Taste of the city

In Beijing's Chaoyang, one will never miss out on the wide array of international and Chinese culinary delights on offer.

International food

You can easily find a variety of cuisines, including those from Europe and the Americas, as well as Southeast Asian and Middle Eastern options, among others, around the Sanlitun area, Xiaoyun Road, and Lucky Street near Solana shopping mall.



Steakhouse

Wolfgang's Steakhouse
(Worker's Stadium North Road)



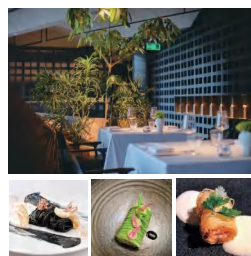
French Cuisine

Oyster Talks



Japanese Cuisine

Takakura



European Cuisine

Amico BJ

Tips

You can download the Dianping app to search for nearby and recommended cuisine; You can also download the Meituan/Ele me app and order takeout food to your residence.



Scan for more information

Taste of the city

Chinese delicacies

For Chinese delicacies, there are plenty of options to choose from, including roast duck, hotpot, dumplings, steamed stuffed buns, and various types of regional cuisine.



Taizhou Cuisine

Xin Rong Ji
(Xinyuan South Road Branch)



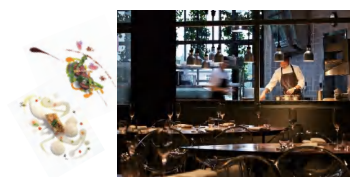
Vegetarian Cuisine

Lamdre



Beijing Cuisine

Sheng Yong Xing
(Beijing Chaoyang)



Innovative Cuisine

Ling Long



Cantonese Cuisine

The Beijing Kitchen



Yunnan Cuisine

Hong 0871

Shopping & entertainment

High-End Fashion Malls



China World Mall

The Commercial Center of China World Mall at Beijing CBD in Chaoyang features all types of commodities, surrounded by various restaurants and entertainment facilities.



Beijing SKP/SKP-S

SKP is one of the most iconic high-end fashion department stores in the world. SKP-S features a sense of futuristic science.



Solana

Solana is surrounding the Liangma River Commercial Rimare home to some of the most popular and fashionable indoor and outdoor shopping malls. Boat rides are also available in the area.



Sanlitun

Sanlitun, an area near the embassies, is a commercial landmark in Beijing, known for fashionable and trendy products. Its commodities are dubbed the weathervane of new products.



THE BOX Chaowai I Youthful Strength Center

With the goal of creating a new form of curatorial retail oriented to the consumption needs of young people aged 15 to 29 years, THE BOX brings together innovative retail, art exhibition, intelligent technology, and entertainment experience.

Shopping & entertainment

Characteristic Shopping Centers



Silk Street

Silk Street is a high-quality shopping venue for “Beijing Gifts” and “Chinese Gifts”, featuring a collection of Chinese original-character products such as silk, tea, porcelain, pearls, clothing, and handicrafts designed and produced in China.



Panjiayuan Antique Market

The market has over 4,000 operating merchants and nearly 10,000 businesspeople, with 60 percent of the operators from 28 provinces, municipalities, and autonomous regions outside Beijing.



Parkview Green Fangcaodi

Parkview Green Fangcaodi is the most artistic shopping center in Beijing. It offers an environment which satisfies the needs of consumers' shopping and art appreciation.



Sanyuanli Wet Market

Sanyuanli Wet Market is known as the paradise of high-grade food ingredients. Different ingredients, whether they are domestic or international, are available at the market.



China National Film Museum

The China National Film Museum is currently the world's largest national-level professional film museum, featuring over 1,500 films, more than 4,300 images, including eight national-level collections.

Emergency services

In China, different emergency numbers are used for different purposes.

Tips Free multilingual telephone interpretation services are available, including English (24/7), French, German, Spanish, Russian, Arabic, Japanese and Korean (8 hours each day).

119

The 119 service should be dialed for fire fighting, disaster relief, emergency rescue, and some other critical situations.



120

The 120 service is for pre-hospital care, which covers on-site first aid, emergency treatment in transit, and care-oriented medical services. The service is available 24/7 and patients transported to the hospital via the 120 service will be given priority in receiving medical attention.



110

The 110 service is available 24/7 and is used for public security, such as reporting crimes and requesting police assistance. It also provides assistance in non-criminal situations, such as helping people find lost items, assisting with traffic accidents, and providing directions and other information.

There are no charges for making and receiving calls.



122

This 24/7 service is for traffic accidents and road emergency assistance. It can also be used for information regarding traffic jams, related consultation and complaints.



Information services

For other enquires or help, please contact relevant services.

12345 Public Service Hotline

The public service hotline is for opinions, suggestions and complaints on topics such as people's needs. Contact also available via WeChat official account "Chaoyang 12345".

Scan for more information



Chaoyang District People's Government of Beijing Municipality

"The Beijing Chaoyang" portal website's main task is to release various government information, serving as a window for promoting the image of Beijing's Chaoyang District.

Scan for more information



Beijing Municipal Bureau of Government Service and Management

The Beijing People's Government website includes a variety of high-quality channels such as the Mayor's Mailbox, providing assistance and support for the urban life of the people.

Scan for more information



Beijing Service

The international version of the Beijing Municipal Government's portal website and WeChat official account "BeijingService" integrates information release, public services and consultation, aiming to provide convenient digital services for foreigners.

Scan for more information



Notes

Produced by Chaoyang District Foreign Affairs Office of Beijing Municipality and China Daily

Chaoyang District Foreign Affairs Office of Beijing Municipality
http://www.bjchy.gov.cn

All rights reserved. No part of this publication may be reproduced, stored in a retrieval system, or transmitted in any form or by any means, electronic, mechanical, photocopying, recording or otherwise, without the prior permission of the publishers.